

# DPG User Manual

## Contents

Preface .....	3
Important safety information .....	4
Informations importantes en matière de sécurité.....	5
Repairs .....	8
EU Declaration of Conformity .....	9
Manufacturer's declaration.....	10
The DESKLINE® product.....	12
Warranty .....	12
Maintenance .....	12
Cleaning the desk panel .....	12
Products .....	13
Installation .....	14
Operation .....	19
Settings .....	21
DPG1M .....	21
DPG1C .....	26
Maintenance.....	34
Cleaning the desk panel .....	34
Repair and disposal .....	35
Accessories and spare parts.....	35
Contacts.....	36

## Preface

Dear User,

We are delighted that you have chosen a LINAK® product.

LINAK systems are high-tech products based on many years of experience in the manufacture and development of actuators, lifting columns, desk frames, electric control boxes, controls, batteries, accessories and chargers.

This User Manual does not address the end user. It is intended as a source of information for the equipment or system manufacturer only, and it will tell you how to install, use and maintain your LINAK electronics. The manufacturer of the end product has the responsibility to provide a User Manual, where relevant safety information from this manual is passed on to the end user.

We are convinced that your LINAK product/system will give you many years of problem-free operation.

Before our products leave the factory, they undergo both function and quality testing. Should you, nevertheless, experience problems with your product/system, you are always welcome to contact your supplier.

LINAK subsidiaries and some distributors situated all over the world have authorised service centres, which are always ready to help you. Locate your local contact information on the back page.

LINAK provides a warranty on all products, see [Warranty](#).

This warranty, however, is subject to correct use in accordance with the specifications, maintenance being done correctly, and any repairs being carried out at a service centre, which is authorised to repair LINAK products.

Changes in installation and use of LINAK systems can affect their operation and durability. The products may only be opened by authorised personnel.

This User Manual has been written based on the present technical knowledge. LINAK reserves the right to carry out technical modifications and keeps the associated information updated.

**LINAK A/S**

## Important safety information

Safe use of the system is possible only when this document is read completely and the instructions contained are strictly observed.

Failure to comply with instructions marked with the "NOTICE" symbol may result in serious damage to the system or one of its components.

Read all instructions before using this product.

Important safety information on LINAK® products can be found under the following heading(s):



### **DANGER**

Failure to comply with these instructions will result in severe personal injury.



### **WARNING**

Failure to comply with these instructions may result in severe personal injury.



### **CAUTION**

Failure to comply with these instructions can result in minor personal injury.



### **NOTICE**

Failure to comply with these instructions can result in property damage.

## READ AND SAVE THESE INSTRUCTIONS

## Informations importantes en matière de sécurité

Une utilisation sûre du système n'est possible que lorsque ce document est lu dans son intégralité et que les instructions qu'il contient sont strictement respectées.

Le non-respect des instructions marquées du symbole "AVIS" peut entraîner de graves dommages au système ou à l'un de ses composants.

Lisez toutes les instructions avant d'utiliser ce produit.

Des informations de sécurité importantes sur les produits LINAK® sont disponibles dans la ou les rubriques suivantes :



### **DANGER**

Le non-respect de ces instructions entraînera des blessures graves.



### **AVERTISSEMENT**

Le non-respect de ces instructions peut entraîner des blessures graves.



### **ATTENTION**

Le non-respect de ces instructions peut entraîner des blessures corporelles légères.



### **AVIS**

Le non-respect de ces instructions peut entraîner des dommages matériels.

## LIRE ET CONSERVER CES INSTRUCTIONS

## **This device complies with part 15 of the FCC Rules. Operation is subject to the following two conditions:**

- (1) This device may not cause harmful interference, and**
- (2) This device must accept any interference received, including interference that may cause undesired operation**

- **Statement – for all intentional and unintentional radiators:**

Changes or modifications not expressly approved by the party responsible for compliance could void the user's authority to operate the equipment.

- **Statement for digital devices for Class B:**

NOTE: This equipment has been tested and found to comply with the limits for a Class B digital device, pursuant to part 15 of the FCC Rules. These limits are designed to provide reasonable protection against harmful interference in a residential installation. This equipment generates, uses and can radiate radio frequency energy and, if not installed and used in accordance with the instructions, it may cause harmful interference to radio communications. However, there is no guarantee that interference will not occur in a particular installation. If this equipment does cause harmful interference to radio or television reception, which can be determined by turning the equipment off and on, the user is encouraged to try to correct the interference by one or more of the following measures:

- Reorient or relocate the receiving antenna.
- Increase the separation between the equipment and the receiver.
- Connect the equipment into an outlet on a circuit different from that to which the receiver is connected.
- Consult the dealer or an experienced radio/ TV technician for help.

This device contains licence-exempt transmitter(s)/receiver(s) that comply with Innovation, Science and Economic Development Canada's licence-exempt RSS(s). Operation is subject to the following two conditions:

1. This device may not cause interference.
2. This device must accept any interference, including interference that may cause undesired operation of the device.

L'émetteur/récepteur exempt de licence contenu dans le présent appareil est conforme aux CNR d'Innovation, Sciences et Développement économique Canada applicables aux appareils radio exempts de licence. L'exploitation est autorisée aux deux conditions suivantes:

1. L' appareil ne doit pas produire de brouillage;
2. L' appareil doit accepter tout brouillage radioélectrique subi, même si le brouillage est susceptible d' en compromettre le fonctionnement.

### **Labeling requirements:**

This Class B digital apparatus complies with Canadian ICES-003.

Cet appareil numérique de la classe B est conforme à la norme NMB-003 du Canada.



## WARNING

- This appliance can be used by children aged from 8 years and by persons with reduced physical, sensory or mental capabilities or lack of experience and knowledge if they have been given supervision or instruction concerning use of the appliance in a safe way and understand the hazards involved.
- Children shall not play with the appliance. Cleaning and user maintenance shall not be made by children without supervision.

### Only for US and Canadian markets

- Persons who do not have the necessary experience or knowledge of the product/products must not use the product/products. Besides, persons with reduced physical, sensory or mental abilities must not use the product/products, unless they are under surveillance or they have been thoroughly instructed in the use of the apparatus by a person who is responsible for the safety of these persons.
- Moreover, children must be under surveillance to ensure that they do not play with the product.
- It is the operator's responsibility to ensure that there is free space for the application to move without risk for the operator or bystanders before operating the application.



## AVERTISSEMENT

- Cet appareil peut-être utilisé par des enfants âgés de 8 ans et plus, ainsi que les personnes dont les capacités physiques, sensorielles ou mentales sont réduites ou ayant un manque d'expérience et de connaissance si elles ont bénéficié d'une surveillance ou d'instructions concernant l'utilisation de l'appareil en toute sécurité et compris les risques encourus.
- Les enfants ne doivent pas jouer avec l'appareil. Le nettoyage et l'entretien ne doivent pas être réalisés par des enfants sans surveillance

### Seulement pour les marchés américains et canadiens

- Les personnes qui n'ont pas l'expérience ou les connaissances nécessaires sur le ou les produit(s) ne doivent pas le ou les utiliser. Par ailleurs, les personnes ayant des capacités physiques, sensorielles ou mentales réduites ne doivent pas utiliser le ou les produit(s), sauf si elles sont sous surveillance ou ont suivi une formation approfondie de l'utilisation de l'appareil par l'individu responsable de la sécurité de ces personnes.
- De plus, les enfants doivent-être sous surveillance afin de s'assurer qu'ils ne jouent pas avec le produit.
- Il est de la responsabilité de l'opérateur de s'assurer qu'il y a de l'espace libre pour que l'application puisse se déplacer sans risque pour l'opérateur ou les passants avant d'utiliser l'application..



## CAUTION

### Load on the table

#### Risk of injury to persons and of malfunction

- Do not overload the frame.
- Place heavy load centrally on the desk.
- Do not use the desk as a work bench.
- Do not use the frame for lifting persons.
- Do not stand on the desk while it is driving up or down.

## Repairs



### **WARNING**

#### **Opening the product**

Risk of injury to persons

- Do not open the DESKLINE® product.

In order to avoid the risk of malfunction, all DESKLINE® repairs must only be carried out by authorised LINAK workshops or repairers, as special tools must be used and special gaskets must be fitted. Lifting units under warranty must also be returned to authorised LINAK workshops.

# EU Declaration of Conformity



## EU DECLARATION OF CONFORMITY

LINAK A/S  
Smedevænget 8  
DK - 6430 Nordborg

hereby declares under our sole responsibility that LINAK actuator system items

Wireless accessory: BLE2LIN

Wireless handset: HC05BL, HC10BL, HC1ABL, HC10ECO, HC2xBL, HC30BL, HC40BL, HC60BL, BP10BL, DPG1B, DPG1C, DPG1M, DPI-C, FS3BL

complies with the **Radio Equipment Directive (RED) 2014/53/EU** (*OJ L 153, 22.5.2014, p. 62–106*) according to the standard:

Art.3.1 (a) Safety:

EN 62368-1:2014+A11:2017 (Harmonized to LVD) or

EN 60335-1:2012+AC:2014+A11:2014+A13:2017+A1:2019+A14:2019+A2:2019+A15:2021 (Harmonized to LVD)

Art.3.1 (a) Health:

EN 62479:2010 (Harmonized to LVD)

EN 50663:2017

Art. 3.1(b) EMC:

ETSI EN 301 489-1 V2.2.3;

ETSI EN 301 489-17 V3.3.1

Art. 3.2 Radio:

ETSI EN 300 328 V2.2.2

complies with Directive **2011/65/EU** of the European Parliament and of the Council of 8 June 2011 on the restriction of the use of certain hazardous substances in electrical and electronic equipment (*OJ L 174, 1.7.2011, p. 88–110*) and Directive **2015/863** (*OJ L 137, 4.6.2015, p. 10–12*) (amending Annex II to Directive 2011/65/EU) according to the standard:

EN IEC 63000:2018

Where this product or system includes or is supplied with batteries, those batteries comply with the requirements of Regulation (EU) 2023/1542.

Nordborg, 2026-2-6

**LINAK A/S**

Dragan Macura

Regulatory Compliance Manager

Deskline and Homeline Segments

Authorized to compile the relevant technical documentation

Original Declaration 

# Manufacturer's declaration

## DECLARATION OF INCORPORATION OF PARTLY COMPLETED MACHINERY

**LINAK A/S**  
Smedevænget 8  
DK - 6430 Nordborg

Herewith declares that LINAK DESKLINE® products as characterized by the following models and types:

**Control Boxes:** CBD6Sa000b0A-c09 (Where -a: can be P, C or H, -b: can be 2, 3 or 4 and -c: can be 0 or 7)

**Linear Actuators:** LA31

**Built in actuator(s):** DB5, DB6, DB14,

**Lifting Columns:** DL1A, DL4S, DL2, DL5, DL6, DL7, DL8, DL9, DL10, DL11, DL12, DL14, DL15, DL16, DL17, DL18, DL19, DL20, DL21, LC1

**Desk Panels:** DPA, DPB, DPH, DPF1K, DPF1M, DPF2K, DPF3K, DPF1C, DPF1D, DPF1U, DPF1W, DPF4T, DPG1K, DPG1M, DPG1B, DPG1C, DPT, DP1V01, DP1CS, DP1K, DP1U, DP2K, DP3K, DPN, DPWA, DPI-K, DPI-C

**Accessories:** BLE2LIN002, BLE2LIN003, DESK SENSOR 1, USB2LIN, DCConnector, BA001

complies with the following parts of the Machinery Directive 2006/42/EC, ANNEX I, *Essential health and safety requirements relating to the design and construction of machinery*:

- 1.1.2 a) Special use\*
- 1.1.2 b) Selection of the most appropriate methods\*
- 1.1.2 c) Foreseeable misuse\*
- 1.1.2 d) Operator constrains due to the use of personal protective equipment\*

1.1.3 Materials and products\*

- 1.2.1 Safety and reliability of control systems
- 1.2.2 Control devices. Shape, readability, overview\*
- 1.2.3 Starting\*
- 1.2.4 Stopping\*

- 1.5.1 Electricity supply
- 1.5.10 Radiation. EMC. Emission of electromagnetic radiation, X-rays,  $\gamma$ -rays\*
- 1.5.11 External radiation\*

\*need to be further evaluated in the end product

We confirm that prior to market introduction the relevant technical documentation is compiled in accordance with part B of Annex VII and the assembly instruction pursuant to Annex VI.

This documentation or part hereof will be transmitted by post or electronically to a reasoned request by the national authorities.

The products mentioned in this document are to be combined for use in height adjustable furniture.

**This partly completed machinery must not be put into service until the final machinery into which it is to be incorporated has been declared in conformity with the provisions of the Machinery Directive 2006/42/EC where appropriate.**

Nordborg, 2024-02-21

**LINAK A/S**  
Dragan Macura  
Regulatory Compliance Manager  
Deskline and Homeline Segments  
Authorized to compile the relevant technical documentation

Original Declaration

---

Use the DPG1M/DPG1C in an environment with temperature between -10 and +40 °C. Otherwise, the DPG1M/DPG1C may be damaged. It can be operated at altitudes up to 2000 m.

The equipment is a Bluetooth® device powered by 9 V DC or 18 V input charged by an RJ45 port.

Operating Frequency Range:  
Bluetooth® 2402 - 2480 MHz

The maximum RF Output Power:  
-9.81 dBm EIRP

*The Bluetooth® word mark and logos are registered trademarks owned by Bluetooth SIG Inc. and any use of such marks and logos by LINAK A/S is under license.*

## The DESKLINE® product

This DESKLINE product is developed for indoor use in offices.

Do not use it in environments that have to be cleaned with aggressive detergents.

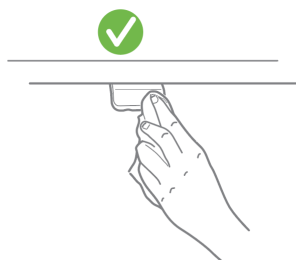
### Warranty

This DESKLINE product is subject to warranty pursuant to the terms of LINAK DESKLINE Warranty Paper, available on the LINAK website [www.linak.com/warranty](http://www.linak.com/warranty).

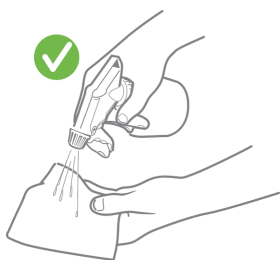
### Maintenance

#### Cleaning the desk panel

Clean your desk panel with a soft damp cloth. Universal cleaning detergents may be used.



For disinfection of the desk panel, use a 70 percent isopropyl alcohol either as a wipe or add a small amount to a soft cloth.

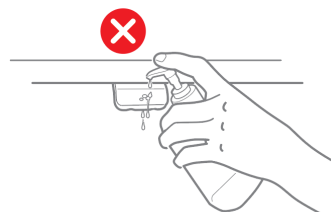
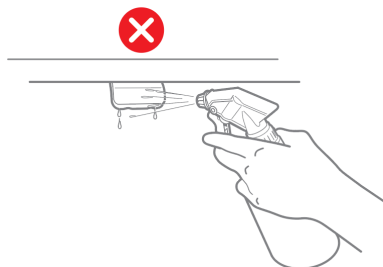


### CAUTION

#### Risk of damaging the desk panel

The desk panel is not a sealed unit and there are electronics inside it.

- Ensure that liquids or moisture does not enter an opening. It may damage the PCB and ruin the desk panel.
- Avoid spraying the cleaning agent or disinfectant directly on the desk panel.



- Cleaning agents and disinfectants must not be highly alkaline or acidic (pH value must be 6 to 8), and they must not contain bleach or chlorine.
- Do not use hand sanitizer gel as a cleaning agent.

## Products

### Desk Panel DPG1K



- Up/down drive

### Desk Panel DPG1M



- Up/down drive
- Up to four favourite positions
- Bluetooth®
- Display

### Desk Panel DPG1C



- Up/down drive
- Up to four favourite positions
- Bluetooth®
- Display

## Installation

### Placing the DPG



Place the DPG1C so the display and the light strip are in a visible position

The drawings below are side view examples of how to position the DPG1C with respect to the edge of the tabletop.

1. Place the DPG so it is easy to operate.

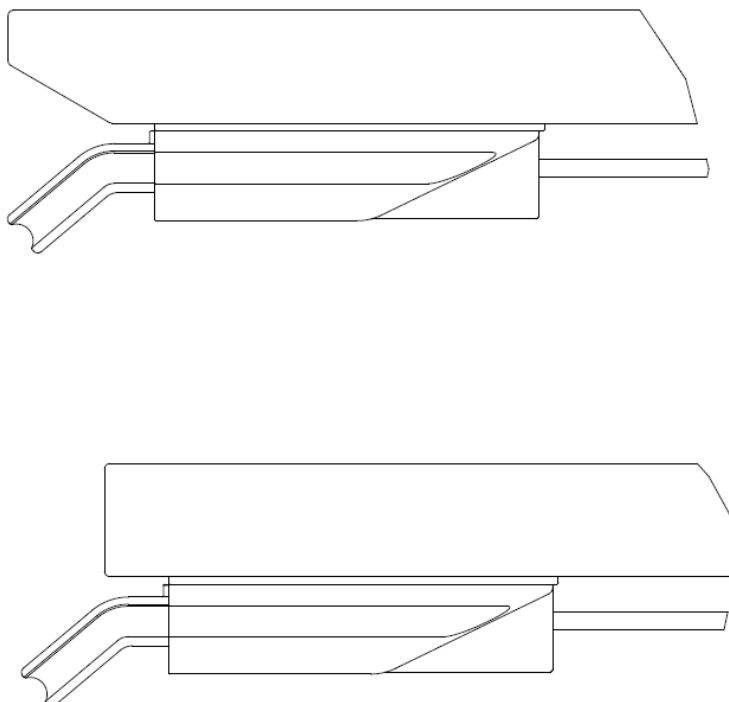


Figure 1 Alignment with respect to the tabletop edge

### Front label

The DPG (SW 1.29 and later from factory) is delivered with the removable front label attached to the paddle. The label has a QR code which leads to the DPG start page.

1. Peel the label off and place it on a visible spot, so the information is easily available.



Figure 2 Removable front label

## Mounting the DPG

### Preparing the tabletop for both DPG sizes (DPG1K/M and DPG1B/C)

The DPG series consists of four different desk panels in two different sizes. The DPG1K and the DPG1M are one size and the DPG1B and the DPG1C are another size.

We recommend predrilling the holes for the DPG to ensure the same aligned position for all desks.

The two desk panel sizes share one hole in the hole pattern, which means three predrilled holes in the tabletop will make it possible to mount both sizes of the DPG.

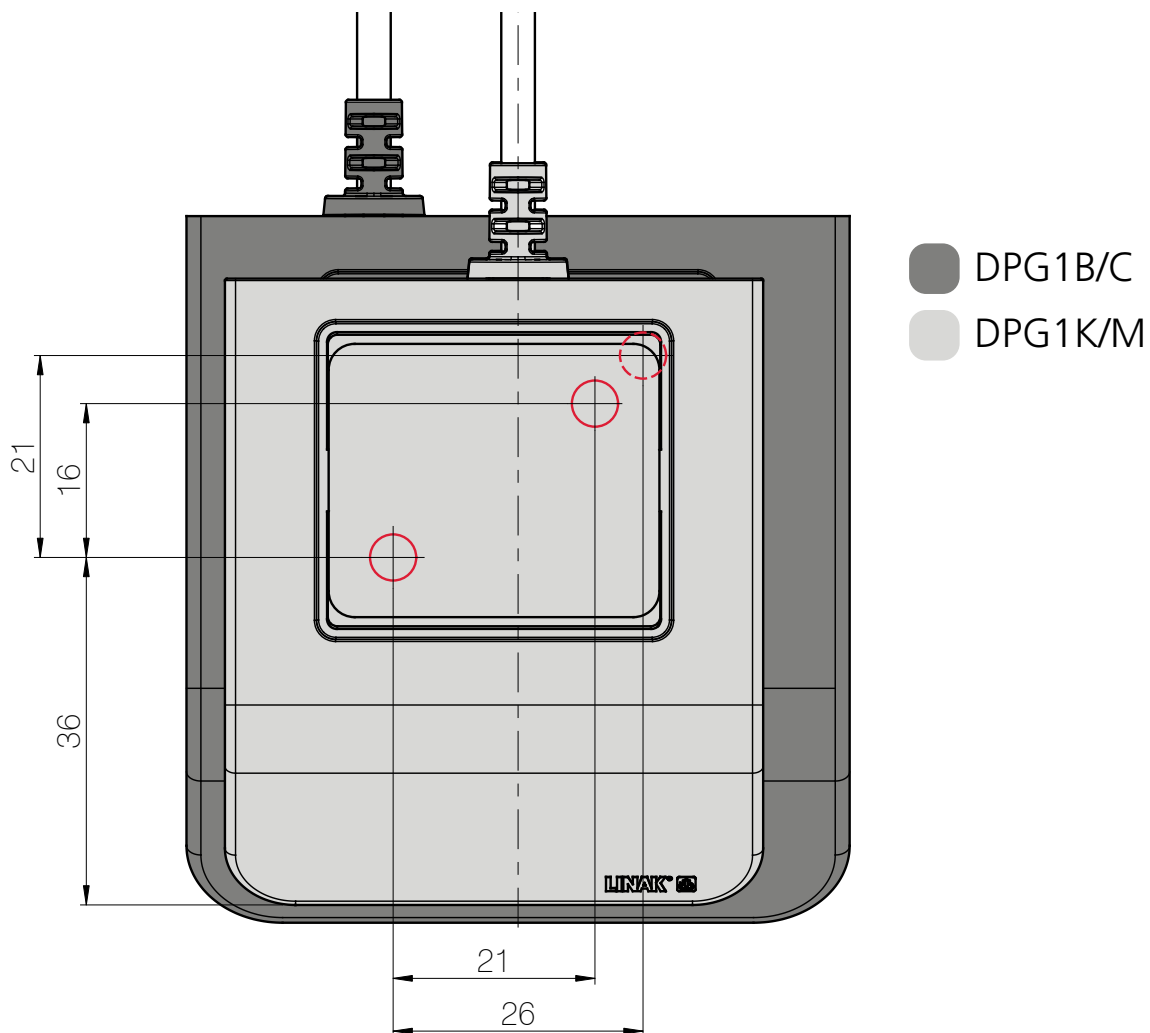


Figure 3 Hole pattern of the DPG sizes. The dashed-line circle indicates the second hole of the DPG1B/C

All four DPG variants share the front hole indicated by the green line.

The DPG1K and the DPG1M share the hole indicated by the red line.

The DPG1B and the DPG1C share the hole indicated by the black line.

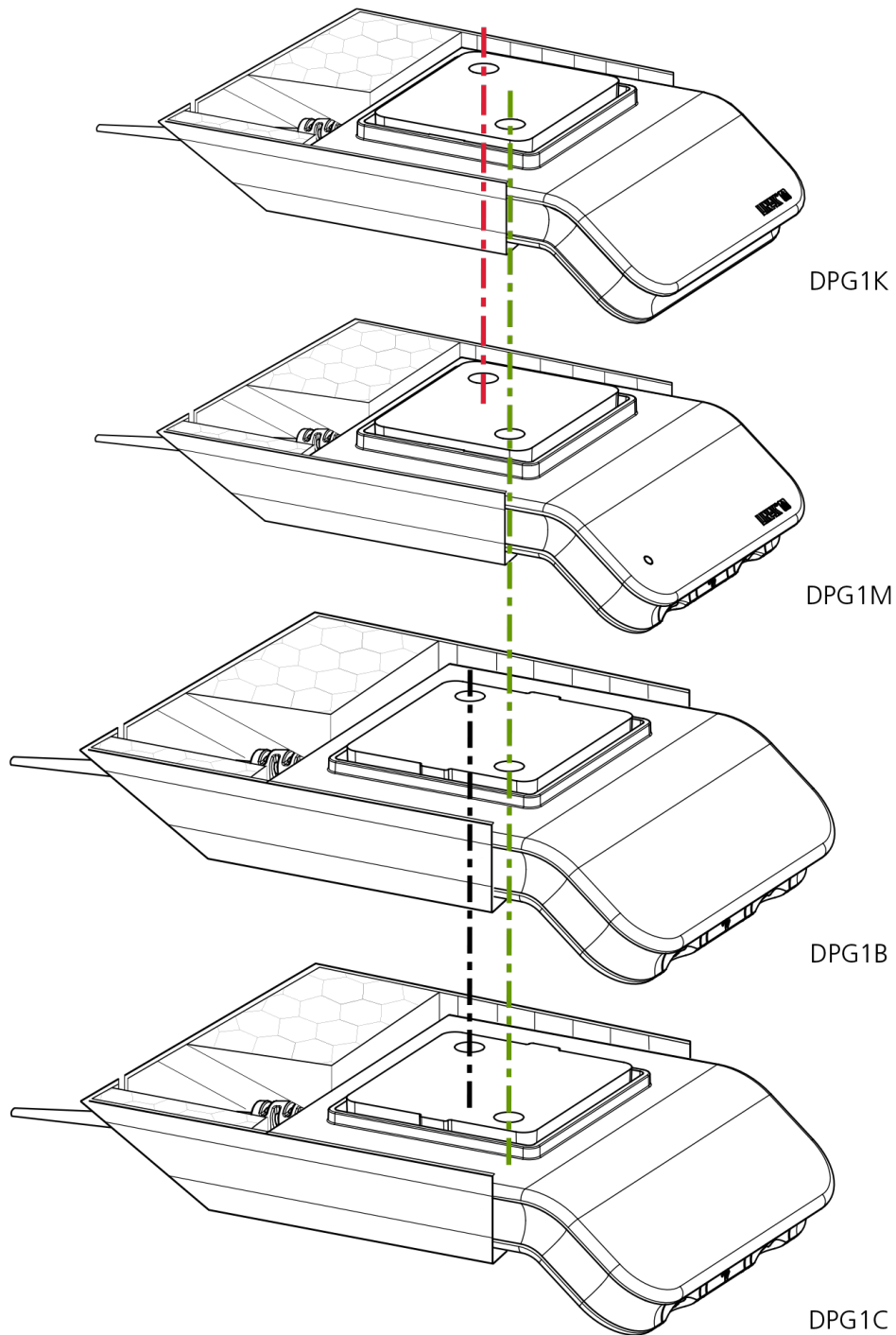
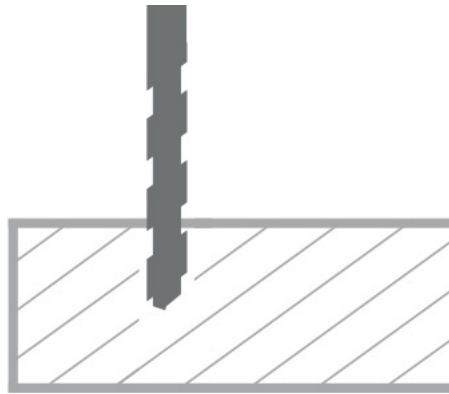
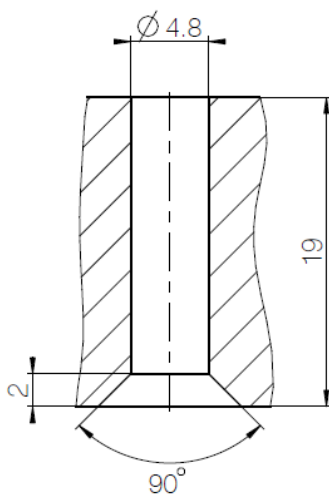


Figure 4 Holes shared by the various DPGs

## 1. Pre-drill holes.

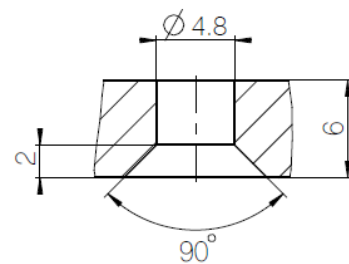


If no holes are pre-drilled, a bulge of wood might evolve between the tabletop and the DPG – which causes the DPG to not be tightened sufficiently to the tabletop. This might lead to incorrect functionality of the DPG.



DPG with cover

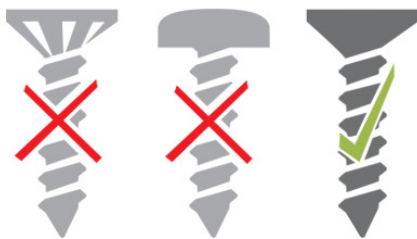
Max. screw length:  
19 mm + thickness of the tabletop



DPG without cover

Max. screw length:  
6 mm + thickness of the tabletop

## 2. Use correct screws.



Mount the DPG to the tabletop using screws with the following specifications:

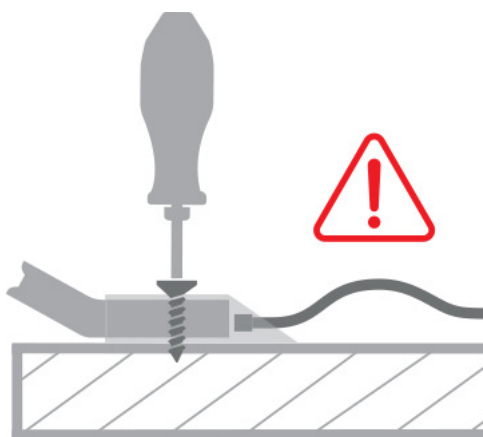
- $\varnothing 4.5$  mm
- 90° countersunk screw



Do not use screws with a milling head as they will cut into the housing of the DPG.

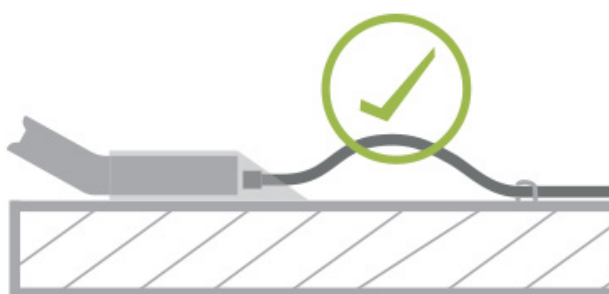
The screws must be fastened sufficiently without being over-tightened. It is not possible to mention a specific torque, as this depends on the type of screw, the material of tabletop and whether holes are pre-drilled or not.

3. Do not over-tighten the screws.



The screws must be fastened sufficiently - without damaging the plastic.

4. Mount the DPG and make sure that the cable is not tightened too much.



When mounting the DPG, it is important to ensure that the cable is not tightened but has free mobility in the first centimetres from the housing. We recommend attaching the cable to the tabletop with a clip as shown on the drawing above.

Via the QR code on the removable front label, you have access to a few useful links.

Read more about mounting the DPG in the [DPG User Manual](#).

Find more information about how to use the DPG in this [short film](#).

Alternatively, you can type the web address.

## Operation

### DPG1C and DPG1M

The DPG has three buttons.

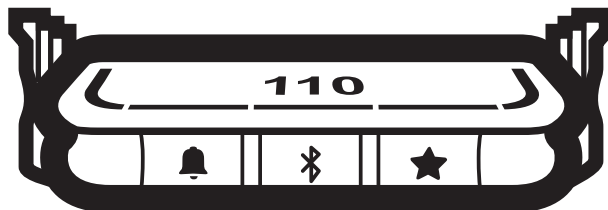





Figure 5 DPG buttons

Each button has a specific function:

Symbol	Description	Function
	Reminder	Setting reminders
	Bluetooth®	Connecting the Desk Connect™ app via Bluetooth® wireless technology
	Favourite	Saving favourite positions



### DPG1C only

#### Display

The DPG1C has an OLED display, which shows the height during drive of the desk and many other texts to guide the users.



#### Adjusting the displayed height of the desk

If the height shown in the display is not correct, it can be adjusted.

1. Press the  and the  buttons on the DPG1C at the same time for five seconds and the height in the display starts to flash.
2. Tilt the DPG1C to change the displayed height without moving the desk. Tilt up to increase the displayed height, tilt down to decrease the displayed height.
3. Press any button to confirm the height or wait for 10 seconds for automatic confirmation.

#### Changing the measurement unit

The measurement unit shown in the display can be set to either cm, mm, or inch.

1. Press the  and the  buttons on DPG1C at the same time for five seconds and the current measurement unit flashes in display.
2. When e.g. "CM" flashes in display, tilt DPG1C once to change measurement unit to inch. "INCH" now flashes in display.
3. Press any button to confirm measurement unit or wait for 10 seconds for automatic confirmation.

## Operating the DPG

Operate the desk panel by tilting it.

1. Tilt and hold up the DPG to drive the desk up, press and hold down the DPG to drive the desk down.
2. Release the DPG when you have reached the requested position.

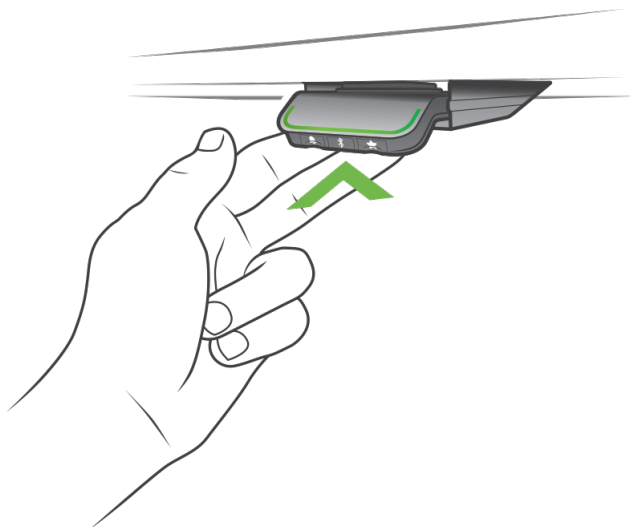


Figure 6 Tilt and hold the DPG to drive the desk up

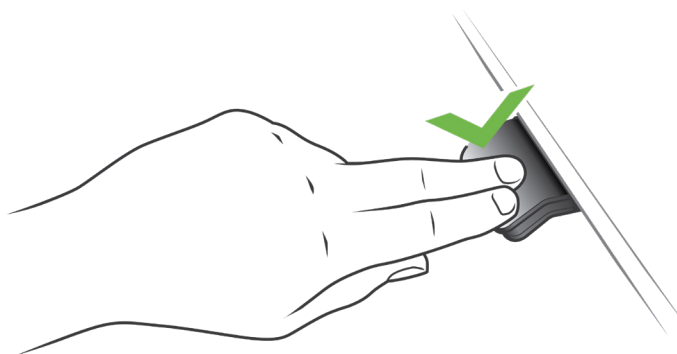


Figure 7 Press and hold the DPG to drive the desk down



## Desk height limits

In case the desk cannot be operated in its entire span (e.g. a shelf is blocking the upwards movement or a filing cabinet is placed under the desk and blocking the downwards movement), it is possible to set an upper limit and a lower limit for the desk height.



### Note:

It must always be possible to drive the desk to its minimum height in case initialisation is required. During initialisation items placed under the desk must be removed.

### Setting upper limit

1. Adjust the desk to the maximum allowed height.
2. Press the  and tilt the DPG up at the same time for 8 seconds until the light stops flashing.
3. Release the  and the DPG.

### Setting lower limit

1. Adjust the desk to the minimum allowed height.
2. Press the  and press the DPG down at the same time for 8 seconds until the light stops flashing.
3. Release the  and the DPG.

## Settings

### DPG1M

#### Favourite positions

##### Saving favourite positions

1. Adjust the desk to a preferred position.
2. Press the ★ button for two seconds.



Figure 8 Saving favourite positions

The LED flashes white two times to indicate that the position is being saved. Not until the LED becomes static white, has the position been saved.

If two favourite positions have been saved and the user adjusts the desk to third position and saves this position, it will overwrite the favourite position closest to the current position.

##### Driving to favourite positions

After saving the favourite positions, the user can reach the positions simply by tilting/pressing the DPG. This way the user can easily change between sitting and standing height without looking at the DPG in the meantime.

1. Tilt/press and hold - when a saved position has been reached, the desk stops.
2. Release DPG within one second.

When the desk stops at a favourite position, the user can move past the favourite position by

- continuing to tilt/press the DPG for more than one second
- or
- releasing the DPG and immediately tilting/pressing it again.

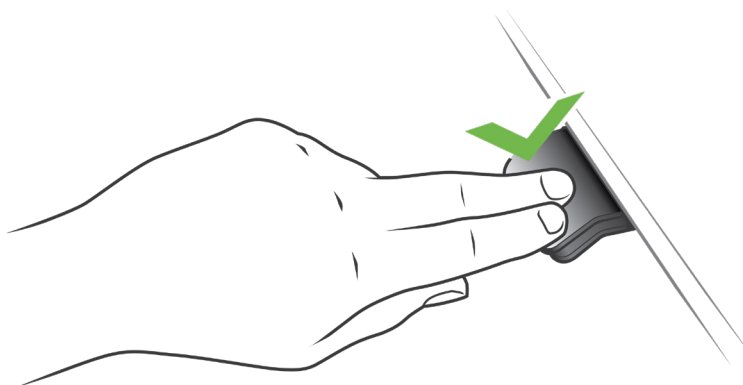


Figure 9 Tilt/press to drive the desk

### Automatic driving to favourite positions

(only possible for “Full version” with “Automatic drive” enabled in the Desk Connect™ app)

1. Double-tap DPG to let the desk adjust automatically to the first position in direction of double-tap.
2. To stop the driving of the desk between two favourite positions, simply tap the DPG once.



Figure 10 Double-tap to automatically adjust the desk to a favourite position

### Erasing favourite positions

1. Press the ★ button for eight seconds to erase all saved favourite positions. The LED flashes red when all the favourite positions are erased.




Figure 11 Erase favourite positions

## Bluetooth®

### Connecting Bluetooth®

1. Download the Desk Connect™ app suited for your device in App store or Google Play. Search for Desk Connect and look for the app *icon*:



2. Press the  button in the middle and hold for two seconds to enable pairing mode.

The LED flashes blue while the desk panel is in pairing mode.

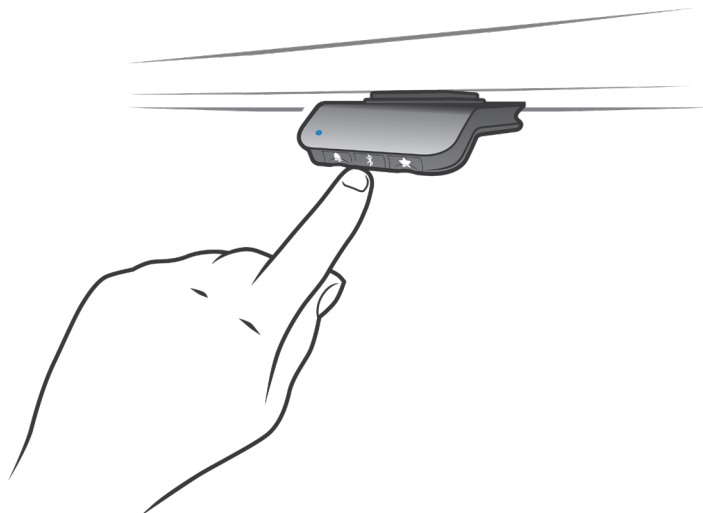


Figure 12 Connect Bluetooth®

## Reminder

The reminder LED is placed in the lower left corner of the DPG1M. The LED is intended to indicate the position of the desk (sitting or standing height). The indication depends on the reminder interval chosen.

If two favourite positions are saved, they will indicate sitting and standing height. If no favourite positions are saved, the sitting height will be the lowest possible height and the standing position will be sitting height plus 30 cm.

While the user is sitting for an appropriate amount of time according to the set interval, the LED calmly pulsates green. When the sitting interval runs out, the calm pulsating green turns into fast pulsating orange for one minute hereafter into static orange to indicate that the user should adjust the desk to standing height. In standing height, the LED pulsates green until a potential timeout. When the desk is adjusted back to sitting height, the LED pulsates green until the reminder goes off again.



Figure 13 Pulsating green LED indicates no need to drive the desk up



Figure 14 Pulsating orange LED indicates that the user needs to drive his/her desk up

### Reminder restart

The reminder automatically restarts when the desk is adjusted to sitting height.

### Reminder timeout

After four hours without any action, the LED will time out. When the DPG1M is tilted, the green light turns back on.



When the LED is enabled for reminders, the DPG1M is no longer in ZERO™ mode as long as the light is on/active.



### Reminder intervals

The LED lights up in three different intensities each representing an interval. The three standard intervals are:

- Interval 1: Reminder after 55 minutes sitting
- Interval 2: Reminder after 50 minutes sitting
- Interval 3: Reminder after 45 minutes sitting

The default interval is reminding after 55 minutes, which means the LED lights up in the weakest intensity.

## Adjusting the reminder interval

1. Press the  button to adjust the interval of getting reminded to change position.
2. Toggle through the intervals by pressing the  button.

When the LED is not lit, the reminder is turned off.

Through the app, it is possible to personalise the three intervals to custom values.

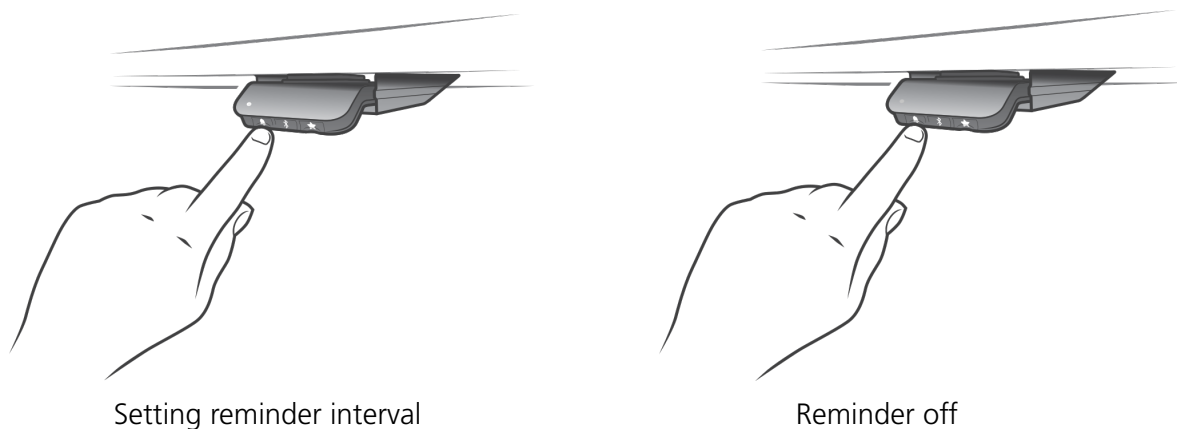



Figure 16 Set the reminder

## Resetting the reminder

1. Press the  symbol for eight seconds to reset the reminder to the default values.

The LED flashes red when the reminder is reset.






Figure 15 Reset the reminder

## Key lock

The operation of the DPG1M can be locked to prevent unintended driving of the desk. As default the key lock is disabled. If enabled, it automatically locks the DPG1M after a configured amount of time. The key lock function can also be configured to indicate attempt to operate the locked DPG1M by showing a red light.

## Unlocking the DPG

1. Press the , the  and the  in sequence (max. one second between each button press).

## DPG1C

### Favourite positions

#### Saving favourite positions 1 and 2

1. Adjust the desk to a preferred position.
2. Press the ★ button for two seconds.



Figure 17 Saving favourite positions

The light strip flashes white two times to indicate that saving the position is in progress. Not until the light strip becomes static white, has the position been saved. The display indicates the saved position with a ★ and a position number. The number next to the ★ indicates the order in which the positions are saved.

- First position saved: "1" is displayed next to the ★.
- Second position saved: "2" is displayed next to the ★.

If the user adjusts the desk to another position and saves this position, it will overwrite the favourite position (1 or 2) closest to the new position.

#### Saving favourite positions 3 and 4

1. Press the ★ button shortly to make display toggle through the four favourite positions (★ with position number next to it).
2. Toggle through these four favourite positions in display and choose which one to save current position as.

E.g. a user wants to save the current position as favourite position 3:

1. Press the ★ button and toggle to the ★ with "3" next to it.
2. Press the ★ button for two seconds and favourite position is saved.

Note:

Favourite positions 3 and 4 can be disabled via the DPG configurator (from DPG SW ver. 1.29).

## Driving to favourite positions

After saving the favourite positions, the user can reach the positions simply by tilting/pressing the DPG. This way the user can easily change between sitting and standing height without looking at the DPG in the meantime.

1. Tilt/press and hold - when a saved position has been reached, the desk stops.
2. Release DPG within one second.

During desk driving, the display will show the height of the desk. When a favourite position has been reached, the display shows a ★ and the position number.

The DPG1C stops at all saved favourite positions, which means up to four different positions during the stroke length of the desk.

When the desk stops at a favourite position, the user can move past the favourite position by

- continuing to tilt/press the DPG for more than one second
- or
- releasing the DPG and immediately tilting/pressing it again.

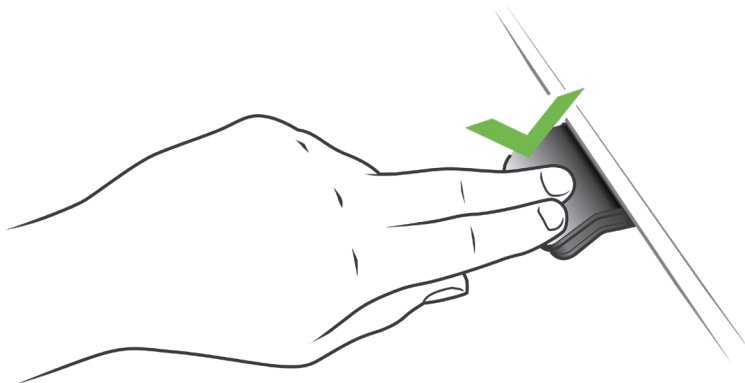


Figure 18 Tilt/press to drive the desk

## Automatic driving to favourite positions

(only possible for "Full version" with "Automatic drive" enabled in the Desk Connect™ app)

1. Double-tap DPG to let the desk adjust automatically to the first position in direction of double-tap.
2. To stop the driving of the desk between two favourite positions, simply tap the DPG once.



Figure 19 Double-tap to automatically adjust the desk to a favourite position

## Erasing favourite positions

1. Press the ★ button for eight seconds to erase all saved favourite positions.

After five seconds, the display shows a countdown, and the light strip flashes red when all the favourite positions are erased.




Figure 20 Erase favourite positions

## Bluetooth®

### Connecting Bluetooth®

1. Download the Desk Connect™ app suited for your device in App store or Google Play. Search for Desk Connect and look for the app *icon*:



2. Press the  button in the middle and hold for two seconds to enable pairing mode.

The display on the DPG1C will inform about the Bluetooth® ID of the desk, which is “DESK” followed by a four-digit number – look for this ID in the list of “Desks nearby” in the Desk Connect™ App.

The light strip flashes blue while the desk panel is in pairing mode.



Figure 21 Connect Bluetooth®

## Reminder

The reminder LED lights through the surface of the DPG1C. The light is intended to indicate the position of the desk (sitting or standing height). The indication depends on the reminder interval chosen.

If two favourite positions are saved, they will indicate sitting and standing height. If no favourite positions are saved, the sitting height will be the lowest possible height and the standing position will be sitting height plus 30 cm.

## Heartbeat (light strip)

The heartbeat reminder is shown as a thin LED light strip. While the user is sitting for an appropriate amount of time according to the set interval, the light strip calmly pulsates green symbolising a heartbeat. When the sitting interval runs out, the calm pulsating green turns into fast pulsating orange for one minute hereafter into static orange to indicate that the user should adjust the desk to standing height. In standing height, the light strip pulsates green until a potential timeout (standard timeout is four hours). When the desk is adjusted back to sitting height, the light strip pulsates green until the reminder goes off again.



Figure 22 Heartbeat - pulsating green light strip indicates no need to drive desk up



Figure 23 Heartbeat - pulsating orange light strip indicates that the user needs to drive his/her desk up

## Battery (light blocks)

The battery reminder is shown as three LED light blocks symbolising the charging/discharging of a battery. The LED light blocks are lit differently depending on the position of the desk.

Sitting:

- During the first third of the set sitting period, three green light blocks are lit symbolising a fully charged battery.
- During the middle third of the period, two green light blocks are lit.
- During the last third of the period only one green block is lit.
- When the sitting period runs out, the last green block turns red to indicate that the user should adjust the desk to standing height.

Standing:

- While the user is standing for the first third of the standing period, one green light block flashes symbolising a battery being charged.
- During the middle third of the period, one green light block is lit and one flashes.
- During the last third of the set period two green blocks are lit and one flashes.
- When the standing period runs out, five green blocks are lit to indicate that the user can adjust the desk to sitting height.

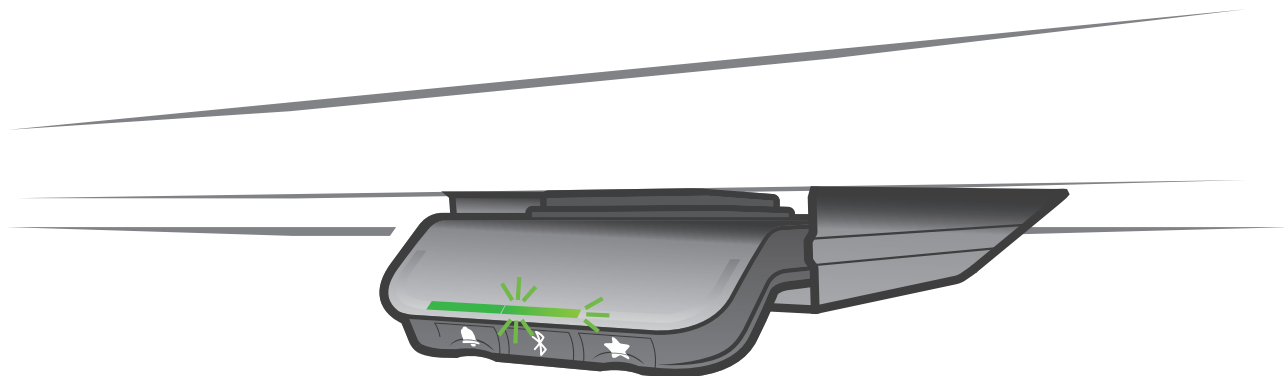


Figure 24 Battery - one green light block is lit and one flashes during the middle third of the standing period

### Reminder restart

The reminder automatically restarts when the desk is adjusted to sitting height.

### Reminder timeout

After four hours without any action, the light strip will time out. When the DPG1C is tilted, the green light turns back on.



When the light (strip or blocks) is enabled for reminders, the DPG1C is no longer in ZERO™ mode as long as the light is on/active.




## Reminder intervals

The reminder intervals are shown as white blocks on the front of the DPG1C. The number of white blocks lit (one, two or three) each represents an interval. The three standard intervals are:

- Interval 1: Reminder after 55 minutes sitting
- Interval 2: Reminder after 50 minutes sitting
- Interval 3: Reminder after 45 minutes sitting

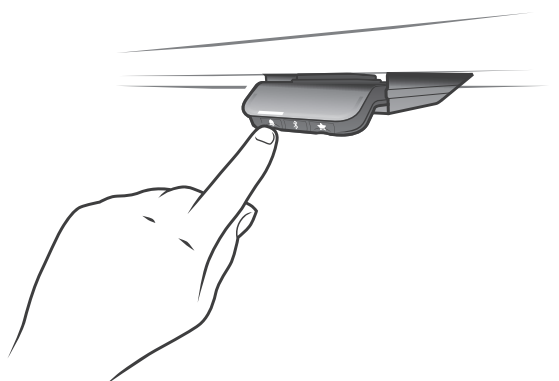
The default interval is reminding after 55 minutes, which means one white block lights up.

## Adjusting the reminder interval

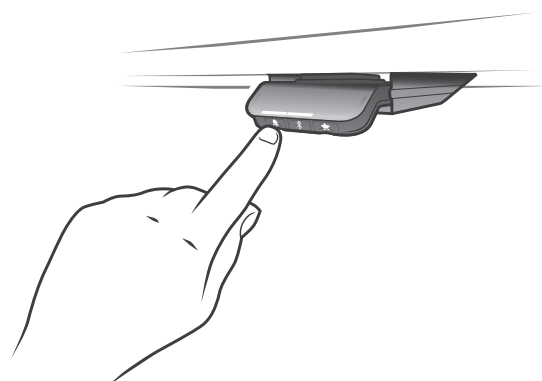
1. Press the  button to adjust the interval of getting reminded to change position.
2. Toggle through the intervals by pressing the  button.
3. Release the  button when the desired interval is indicated.

When no white blocks are lit up, the reminder is turned off.

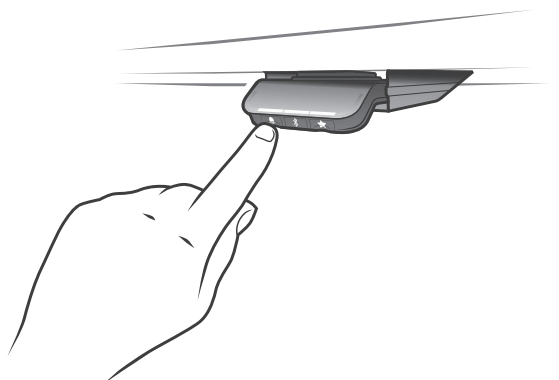
Through the app, it is possible to personalise the three intervals to custom values.



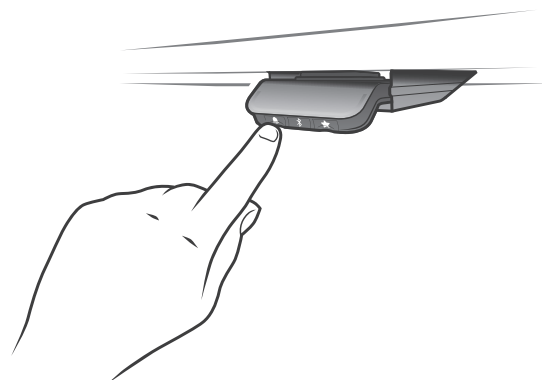
Interval 1: Reminder after 55 minutes sitting



Interval 2: Reminder after 50 minutes sitting




Interval 3: Reminder after 45 minutes sitting



Reminder off

Figure 25 Set the reminder

## Resetting the reminder

1. Press the  symbol for eight seconds to reset the reminder to the default values.

After five seconds the display shows a countdown and the light strip flashes red when the reminder has been reset.

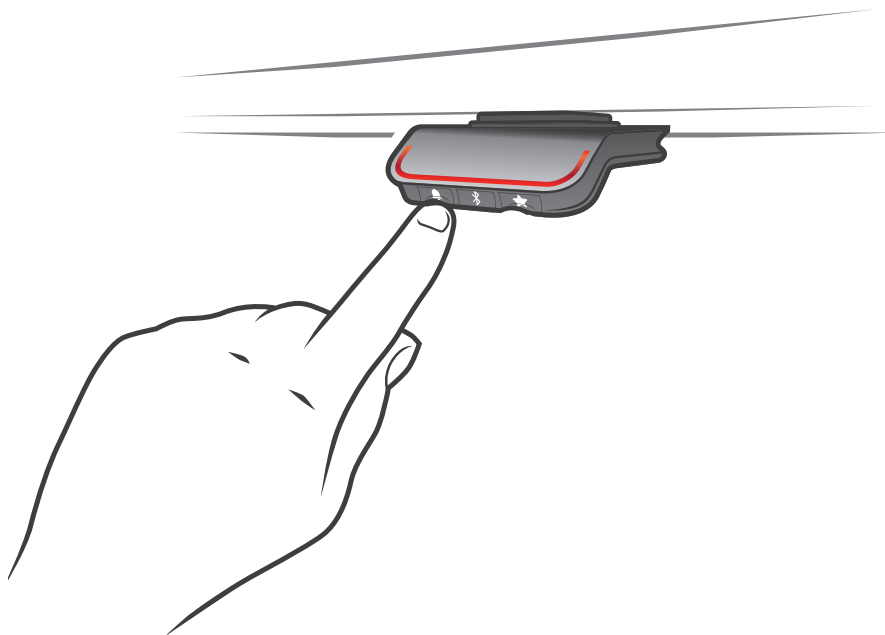






Figure 26 Reset reminder



## Key lock

The operation of the DPG1C can be locked to prevent unintended driving of the desk. As default the key lock is disabled. If enabled, it automatically locks the DPG1C after a configured amount of time. The key lock function can also be configured to indicate attempt to operate the locked DPG1C by showing a red light and a .

## Unlocking the DPG

1. Press the , the  and the  in sequence (max. one second between each button press).

## Factory reset

Press and hold the  and the  buttons for eight seconds to set the DPG1C to factory default. After five seconds, the display lights up showing an arrow with a countdown [seconds] and RESET. The light strip flashes red three times to indicate the reset is done.

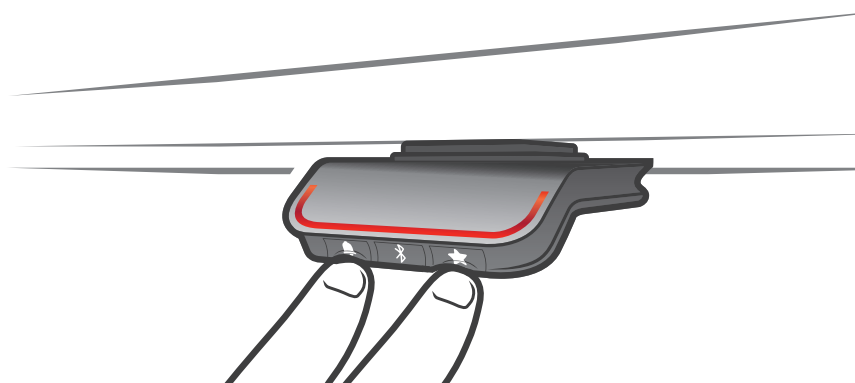


Figure 27 Reset to factory default

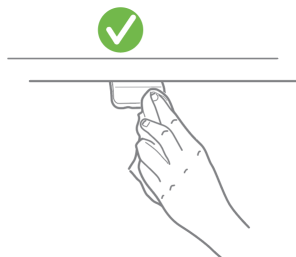


A factory reset will set the DPG back to the configured state, i.e. all configurations made in the DPG configurator will not be reset – only the settings changed directly on the DPG or in the app.

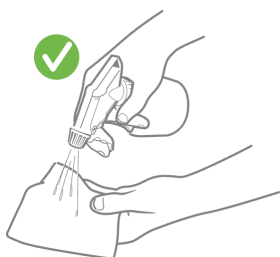
## Maintenance

### Cleaning the desk panel

Clean your desk panel with a soft damp cloth. Universal cleaning detergents may be used.



For disinfection of the desk panel, use a 70 percent isopropyl alcohol either as a wipe or add a small amount to a soft cloth.

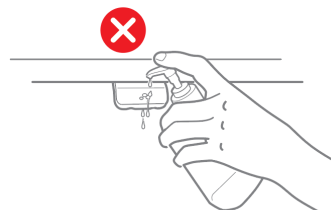
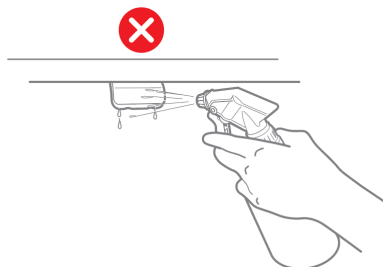


### CAUTION

#### Risk of damaging the desk panel

The desk panel is not a sealed unit and there are electronics inside it.

- Ensure that liquids or moisture does not enter an opening. It may damage the PCB and ruin the desk panel.
- Avoid spraying the cleaning agent or disinfectant directly on the desk panel.



- Cleaning agents and disinfectants must not be highly alkaline or acidic (pH value must be 6 to 8), and they must not contain bleach or chlorine.
- Do not use hand sanitizer gel as a cleaning agent.

## Repair and disposal



### **WARNING**

#### **Opening the product**

Risk of injury to persons and of malfunction

- Do not open the product unless you are authorised to do so.

Only an authorised LINAK® service centre should repair the LINAK products. Products to be repaired under warranty must be sent to an authorised LINAK service centre.

In order to avoid the risk of malfunction, all product repairs must only be carried out by an authorised LINAK Service shop or repairers, as special tools and parts must be used.

If a product is opened by unauthorised personnel there is a risk that it may malfunction at a later date.

LINAK systems or components may be disposed of, possibly by dividing them into different waste groups for recycling or combustion.

We recommend that our product is disassembled as much as possible at the disposal and that you try to recycle it. LINAK systems or components should be disposed of in accordance with the environmental regulations applicable in the respective country.

## Accessories and spare parts

### **Accessories**

Order from your nearest LINAK® sales office, distributor or subsidiary.

### **Spare parts**

Please contact your nearest LINAK sales office for information on spare parts.

# Contacts

## FACTORIES

Denmark - Headquarters  
LINAK A/S  
Phone: +45 73 15 15 15  
Fax: +45 74 45 80 48  
Fax (Sales): +45 73 15 16 13  
Web: www.linak.com

China  
LINAK (Shenzhen) Actuator Systems, Ltd.  
Phone: +86 755 8610 6656  
Phone: +86 755 8610 6990  
Web: www.linak.cn

Slovakia  
LINAK Slovakia s.r.o.  
Phone: +421 51 7563 444  
Web: www.linak.sk

Thailand  
LINAK APAC Ltd.  
Phone: +66 33 265 400  
Web: www.linak.com

USA  
LINAK U.S. Inc.  
Americas Headquarters  
Phone: +1 502 253 5595  
Fax: +1 502 253 5596  
Web: www.linak-us.com  
www.linak-latinamerica.com

## SUBSIDIARIES

Australia  
LINAK Australia Pty. Ltd  
Phone: +61 3 8796 9777  
Fax: +61 3 8796 9778  
E-mail: sales@linak.com.au  
Web: www.linak.com.au

Austria  
LINAK Zweigniederlassung - Österreich (Wien)  
Phone: +43 (1) 890 7446  
Fax: +43 (1) 890 744615  
E-mail: info@linak.de  
Web: www.linak.at - www.linak.hu

Belgium  
LINAK Actuator-Systems NV/SA  
(Belgium & Luxembourg)  
Phone: +32 (0)9 230 01 09  
E-mail: beinfo@linak.be  
Web: www.linak.be - www.fr.linak.be

Brazil  
LINAK Do Brasil Comércio De Atuadores Ltda.  
Phone: +55 (11) 2832 7070  
Fax: +55 (11) 2832 7060  
E-mail: info@linak.com.br  
Web: www.linak.com.br

Canada  
LINAK Canada Inc.  
Phone: +1 502 253 5595  
Fax: +1 416 255 7720  
E-mail: info@linak.ca  
Web: www.linak-us.com

Czech Republic  
LINAK C&S s.r.o.  
Phone: +42 058 174 1814  
Fax: +42 058 170 2452  
E-mail: info@linak.cz  
Web: www.linak.cz - www.linak.sk

Denmark - International  
LINAK International  
Phone: +45 73 15 15 15  
E-mail: info@linak.com  
Web: www.linak.com

Denmark - Sales  
LINAK Danmark A/S  
Phone: +45 86 80 36 11  
Fax: +45 86 82 90 51  
E-mail: linak@linak-silkeborg.dk  
Web: www.linak.dk

Finland  
LINAK OY  
Phone: +358 10 841 8700  
E-mail: linak@linak.fi  
Web: www.linak.fi

France  
LINAK France E.U.R.L.  
Phone: +33 (0) 2 41 36 34 34  
Fax: +33 (0) 2 41 36 35 00  
E-mail: linak@linak.fr  
Web: www.linak.fr

Germany  
LINAK GmbH  
Phone: +49 6043 9655 0  
Fax: +49 6043 9655 60  
E-mail: info@linak.de  
Web: www.linak.de

India  
LINAK A/S India Liaison Office  
Phone: +91 120 4531797  
Fax: +91 120 4786428  
E-mail: info@linak.in  
Web: www.linak.in

Ireland  
LINAK UK Limited (Ireland)  
Phone: +44 (0)121 544 2211  
Fax: +44 (0)121 544 2552  
+44 (0)796 855 1606 (UK Mobile)  
+35 387 634 6554 (Rep.of Ireland Mobile)  
E-mail: sales@linak.co.uk  
Web: www.linak.co.uk

Italy  
LINAK ITALIA S.r.l.  
Phone: +39 02 48 46 33 66  
Fax: +39 02 48 46 82 52  
E-mail: info@linak.it  
Web: www.linak.it

Japan  
LINAK K.K.  
Phone: 81-45-533-0802  
Fax: 81-45-533-0803  
E-mail: linak@linak.jp  
Web: www.linak.jp

Malaysia  
LINAK Actuators Sdn. Bhd.  
Phone: +60 4 210 6500  
Fax: +60 4 226 8901  
E-mail: info@linak-asia.com  
Web: www.linak.my

Netherlands  
LINAK Actuator-Systems B.V.  
Phone: +31 76 5 42 44 40 /  
+31 76 200 11 10  
E-mail: info@linak.nl  
Web: www.linak.nl

New Zealand  
LINAK New Zealand Ltd  
Phone: +64 9580 2071  
Fax: +64 9580 2072  
E-mail: nzsales@linak.com.au  
Web: www.linak.com.au

Norway  
LINAK Norge AS  
Phone: +47 32 82 90 90  
E-mail: info@linak.no  
Web: www.linak.no

Poland  
LINAK Polska  
LINAK Danmark A/S (Spółka Akcyjna)  
Phone: +48 22 295 09 70 /  
+48 22 295 09 71  
E-mail: info@linak.pl  
Web: www.linak.pl

Republic of Korea  
LINAK Korea Ltd.  
Phone: +82 2 6231 1515  
Fax: +82 2 6231 1516  
E-mail: info@linak.kr  
Web: www.linak.kr

Slovakia  
LINAK Slovakia S.R.O.  
Phone: +421 51 7563 444  
Web: www.linak.sk

Spain  
LINAK Actuadores, S.L.U.  
Phone: +34 93 588 27 77  
Fax: +34 93 588 27 85  
E-mail: esma@linak.es  
Web: www.linak.es

Sweden  
LINAK Scandinavia AB  
Phone: +46 8 732 20 00  
Fax: +46 8 732 20 50  
E-mail: info@linak.se  
Web: www.linak.se

Switzerland  
LINAK AG  
Phone: +41 43 388 31 88  
E-mail: info@linak.ch  
Web: www.linak.ch - www.fr.linak.ch  
www.it.linak.ch

Taiwan  
LINAK (Shenzhen) Actuator systems Ltd.  
Taiwan Representative office  
Phone: +886 2 272 90068  
Fax: +886 2 272 90096  
E-mail: sales@linak.com.tw  
Web: www.linak.com.tw

Turkey  
LINAK İhr. San. ve Tic. A.Ş.  
Phone: +90 312 4726338  
Fax: +90 312 4726635  
E-mail: info@linak.com.tr  
Web: www.linak.com.tr

United Kingdom  
LINAK UK Limited  
Phone: +44 (0)121 544 2211  
Fax: +44 (0)121 544 2552  
E-mail: sales@linak.co.uk  
Web: www.linak.co.uk

## DISTRIBUTORS

Argentina  
Novotec Argentina SRL  
Phone: 011-4303-8989 / 8900  
Fax: 011-4032-0184  
E-mail: info@novotecargentina.com  
Web: www.novotecargentina.com

Colombia  
MEM Ltda  
Phone: +[57] (1) 334-7666  
Fax: +[57] (1) 282-1684  
E-mail: servicioalcliente@memlda.com.co  
Web: www.mem.net.co

India  
Mechatronics Control Equipments India Pvt Ltd  
Phone: +91-44-28558484, 85  
E-mail: bala@mechatronicscontrol.com  
Web: www.mechatronicscontrol.com

Indonesia  
PT. Himalaya Everest Jaya  
Phone: +6 221 544 8956 /+6 221 544 8965  
Fax: +6 221 619 1925  
Fax (Sales): +6 221 619 4658  
E-mail: hejplastic-div@centrin.net.id  
Web: www.hej.co.id

Israel  
NetivTech LTD  
Phone: +972 55-2266-535  
Fax: +972 2-9900-560  
Email: info@NetivTech.com  
Web: www.netivtech.com

Singapore  
Servo Dynamics Pte Ltd  
Phone: +65 6844 0288  
Fax: +65 6844 0070  
E-mail: servodynamics@servo.com.sg

South Africa  
Industrial Specialised Applications CC  
Phone: +27 011 466 0346  
E-mail: gartht@isagroup.co.za  
Web: www.isaza.co.za

United Arab Emirates  
Mechatronics  
Phone: +971 4 267 4311  
Fax: +971 4 267 4312  
E-mail: mechtron@emirates.net.ae

## Terms of use

LINAK® takes great care in providing accurate and up-to-date information on its products. However, the user is responsible for determining the suitability of LINAK products for a specific application. Due to continual development, LINAK products are subject to frequent modifications and changes. LINAK reserves the rights to conduct modifications, updates, and changes without any prior notice. For the same reason, LINAK cannot guarantee the correctness and actual status of imprinted information on its products.

LINAK uses its best efforts to fulfil orders. However, for the reasons mentioned above, LINAK cannot guarantee availability of any particular product at any given time. LINAK reserves the right to discontinue the sale of any product displayed on its website or listed in its catalogues or in other written material created and produced by LINAK, LINAK subsidiaries, or LINAK affiliates. All sales are subject to the 'Standard Terms of Sale and Delivery for LINAK A/S' available on LINAK websites. LINAK and the LINAK logotype are registered trademarks of LINAK A/S. All rights reserved.



WE IMPROVE YOUR LIFE