

HIGH PERFORMANCE

FABRICS FOR HEALTHCARE, INDUSTRIAL
AND OTHER HEAVY DUTY AREAS



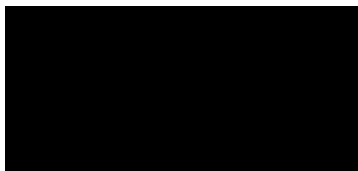
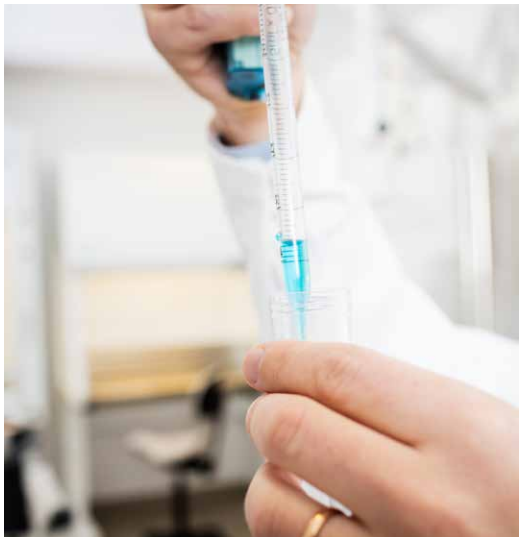
PERFORMANCE • DESIGNED FOR HUMAN PERFORMANCE



Healthcare environments

For easily cleaning and disinfection requirements

PUxx1 is a soft and supple leatherette with a natural leather grain surface. It conducts warmth and is breathable and thereby induce less perspiration. The colour range is subdued with a natural feel. PUxx 1 is permanently flame retardant and meets the highest standards. It is easy to disinfect with alcohol, chlorine or hydrogen peroxide solutions. It's strength, durability and maintainability makes it suitable for many health environments and uses.



PU215816 (S)



PU217482



PU217608



PU217610

Material	100% polyurethane (top coat) Cotton/polyester (backing)
Weight	520 g/m ²
Abrasion resistance	300,000 rubs
Colour fastness to light	6-7
Flammability	BS EN 1021 1&2 (cigarette & match) BS 5852 Crib 5, IMO 2010 FTP: part 8 (with CMHR foam)
Environmental	Oeko-Tex 100, no plasticizers



Waterproof



Flammability

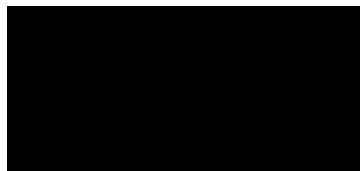


Blood/urine

Healthcare environments

For easily cleaning and disinfection requirements

PUxx2 is a soft and ultra-matte leatherette with a flat grain surface. It is smooth, stretchy and comfortable as it transports heat easily. Its matt finish appears in a wide range of bright colours. PUxx2 is permanently flame retardant and meets the highest standards. It is easy to disinfect with alcohol, chlorine or hydrogen peroxide solutions. It's strength, durability and maintainability makes it suitable for many health environments and uses.



PU227001 (S)



PU223033



PU223048



PU223021

Material	100% polyurethane (top coat) Cotton/polyester (backing)
Weight	520 g/m ²
Abrasion resistance	300,000 rubs
Colour fastness to light	6-7
Flammability	BS EN 1021 1&2 (cigarette & match) BS 5852 Crib 5, CAL117-2013, IMO 2010 FTP: part 8 (with CMHR foam)
Environmental	Oeko-Tex 100, no plasticizers



Waterproof



Flammability



Blood/urine

Healthcare environments

Easily cleanable with anti-bacterial treatment

Dolce is a soft artificial leather with a natural leather grain surface. It has a Silverguard® protection (Silverion technology), a natural environmental friendly bacteria-fighting defense to inhibit odor and stain causing bacteria. Dolce is mildew- and scratch-resistant and easily cleanable with alcohol and chloride solutions. Its versatility makes it suitable for both healthcare and other environments.



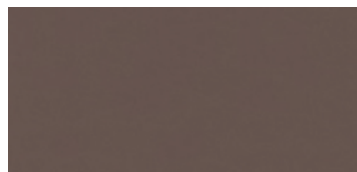
DCE6724



DCE6728 (S)



DCE6718



DCE6727

Material	100% polyurethane (top coat) 100% rayon (backing)
Weight	370 g/m ²
Abrasion resistance	>300,000 rubs (EN ISO 12947:1999 Part 2)
Flammability	BS EN 1021 1&2 (cigarette & match) California 117, Section E IMO FTP code 2010
Cold crack resistance	-23° C
UV-resistance	CFFA-2 C2, ASTM D-4329-05 QUV (40h)
Environmental	No heavy metals, no plasticizers



Waterproof



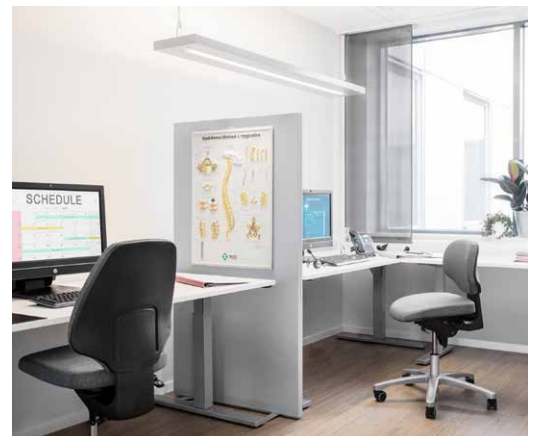
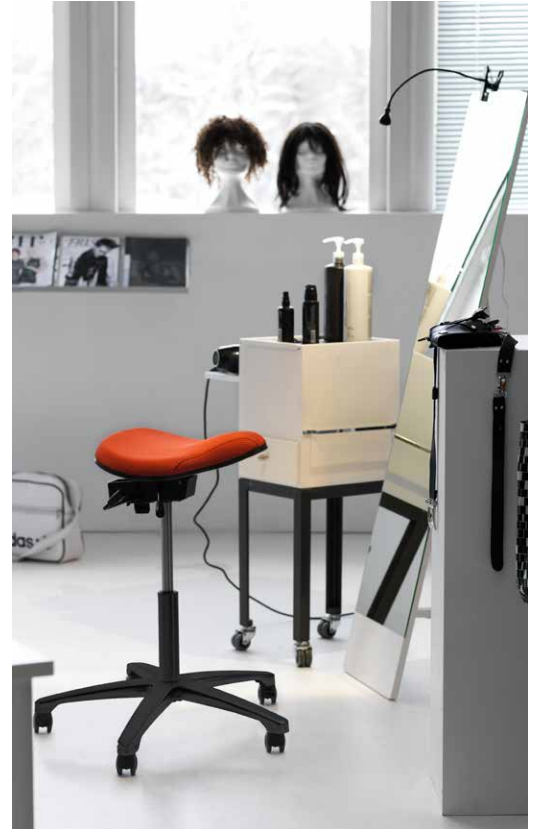
Blood/urine



Flammability



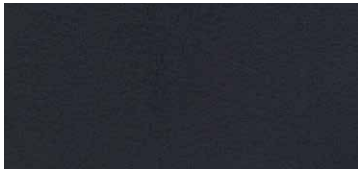
Antimicrobial



Healthcare environments

Permablock® protection against germs, abrasion and stains

Valencia is a vinyl with leather grain emboss engineered to meet the most stringent requirements for health institutions. Its UV stabilized pigments makes it also suitable for use in ships and in outdoor areas. It has a fungal and bactericidal surface that is water repellent and urine, blood and oil resistant. Valencia is easy to maintain and can be cleaned with alcohol (Isopropyl) and disinfectant (hydrogen peroxide) or hydrogen peroxide solutions. It's strength, durability and maintainability makes it suitable for many health environments and uses.



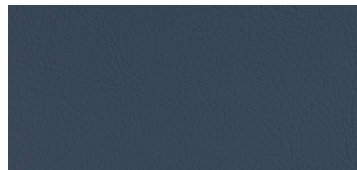
VAN9035 (S)



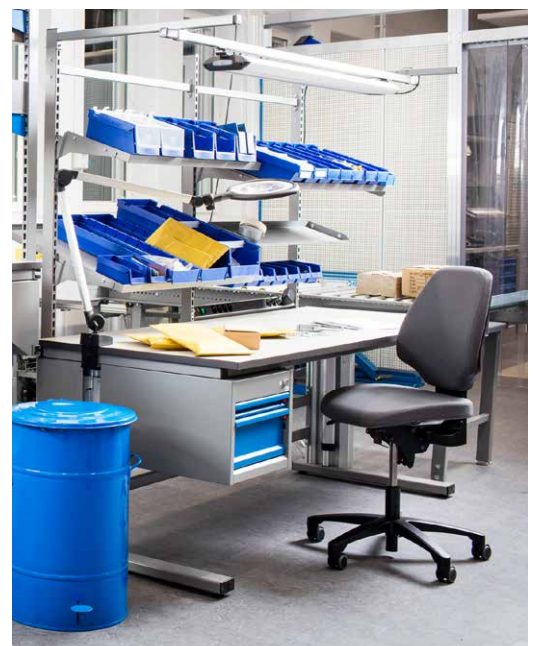
VAN4045



VAN3068



VAN4042



Material	100% polyvinyl chloride (top coat) 100% polyester (backing)
Weight	650 g/m ²
Abrasion resistance	>300,000 rubs [EN ISO 12947:1999 Part 2]
Flammability	BS EN 1021 1&2 (cigarette & match) IMO A652 [16] (with CMHR foam)
Cold crack resistance	-23 °C
UV-resistance	XENOTEST DIN 54004/ NTC 1479



Waterproof



Blood/urine



Flammability



Antimicrobial

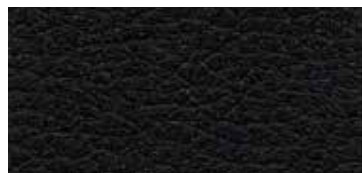


Antistatic

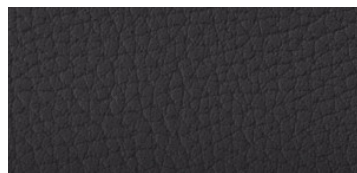
Healthcare environments

Protection against growth and spread of mould and mildew

Ambla Exmoor is a vinyl with leather grain emboss made to meet the stringent requirements of healthcare environments. It is durable and inherently flame retardant. It has an incorporated antimicrobial additive (Actifresh®) making it protective against the growth and spread of mould and mildew. Ambla is resistant to most mild acids, alkalis and household stains. Cleaning and disinfection may be performed when compatible with the recommendations by Ambla. Valencia is easy to maintain and can be cleaned with alcohol (Isopropyl) and disinfectant (hydrogen peroxide) or hydrogen peroxide solutions. It's strength, durability and maintainability makes it suitable for many health environments and uses.



AMB002 (S) Exton



AMB941 Hurlstone



AMB942 Holnicote



AMB004 Allerford

Material	100% polyvinyl chloride (top coat) 100% cotton (backing)
Weight	840 ±50 g/m ²
Abrasion resistance	300,000 rubs - BS EN ISO 12947 1,2,3,4
Flammability	BS EN 1021 1&2 (cigarette & match) BS 7176 (medium hazard), BS 5852 Clause 11: 2006 Crib 5, IMO Res A 652 (16) (with CMHR foam)
Colour fastness to light	6



Waterproof



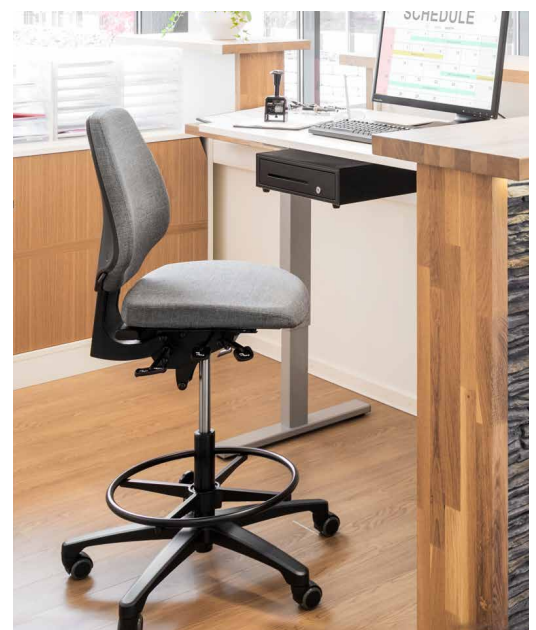
Flammability



Antimicrobial



Blood/urine



Antistatic Synthetic leather

www.nevotex.se

Cleanroom, ESD and laboratory environments

ESD001 is a versatile artificial leather that meets the most stringent requirements in highly sensitive electronic and medical environments. It is strong and durable and has electronic discharge (ESD) protective properties. It is also blood, urine and water resistant and easily cleanable which makes it suitable for laboratory areas.



ESD001 (S)

Material	100% polyvinyl chloride (topcoat) 100% polyester (backing)
Weight	580±50 g/m ² ISO 2286
Colour fastness to light	6 - ISO 105 B02/B04
Colour fastness to rubbing	4/4-5 (wet/dry) ISO 105 X12
Flammability	BS EN 1021 - 1 (cigarette)
Electrical resistance values	10 000á 1000 000 ohms - ISO 2878
Staining resistance blood and urine	4/5 - NF EN 15973
Environmental	Reach [Directive 1907/2006/EC]



Waterproof



ESD-safe



Antistatic



Blood/urine



Flammability



ESD001 is certified for Cleanroom on RH Logic 400 and RH Activ 200/220 according to:
EN 61340-5-1:2007: Protection of electronic devices from electrostatic phenomena and EN 61340-2-3:2000: Electrostatics

-Part 2-3:
Methods of test for determining the resistance and resistivity of solid planar materials used to avoid electrostatic charge accumulation. Offer the ultimate protection for sterile and Cleanroom

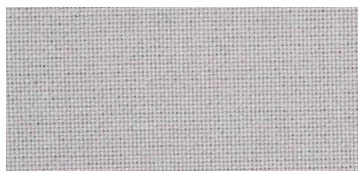
ESD and electronic environments

Fulfills the high requirements for electrostatic protective areas

Global ESD is a wool fabric with metal fibers which has leading abilities. These antistatic properties makes it suitable in areas where prevention of static electricity is needed. It meets the standards and requirements for industries with highly sensitive electronic environments. Global ESD comes in a limited colour range adapted to the needs of these applications.



GL191E (S)



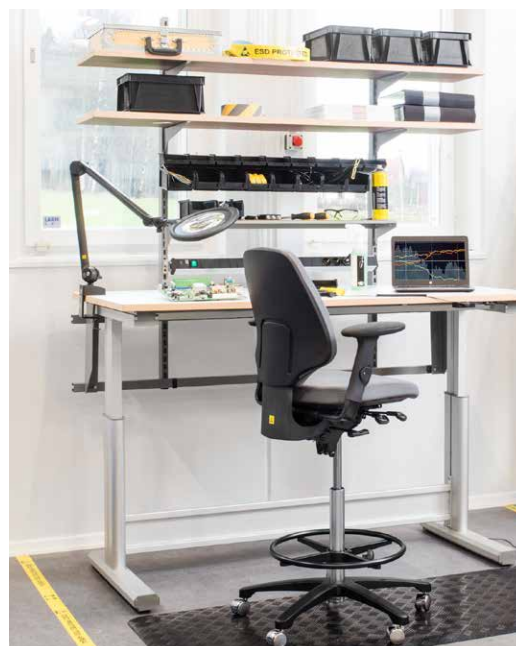
GL141E



GL161E



GL153E



Material	90% wool / 10% metal fibre
Weight	570 g/m ²
Abrasion resistance	50,000 rubs (EN ISO 12947-2)
Flammability	BS EN 1021 1&2 (cigarette & match) BS 5852 Part 1
Colour fastness to light	5-7 (EN ISO 105-B02)
Colour fastness to rubbing	3-4/4-5 (wet/dry) ISO 105-X12
Environmental	EU Ecolabel



Antistatic



Flammability

24/7+

www.camirafabrics.com

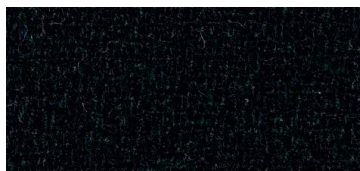
3

pricegroup

24 hour - heavy duty usage areas

For heavy duty areas with high flammability requirements

24/7+ is designed and coloured to withstand the rigors of 24 hour round the clock usage. It offers a clean, sharp finish and is available in a range of colours. Hereby a selection of our standard and extended colours.



WK017



WK012 (S)



WK003



WK013



Material	50% polyamide / 33% wool / 10% flame retardant viscose / 7% viscose
Weight	435g/m ² ±5%
Abrasion resistance	>400,000 rubs
Flammability	BS EN 1021 1&2 (cigarette & match), BS 7176 (low & medium hazard), BS 5852 IgnitionSource 5, UNI 9175 Classe 1 IM (with CMHR foam)
Colour fastness to light	6 (ISO 105 - B02)
Colour fastness to rubbing	4/4 (wet/dry) ISO 105 - X12



Flammability



24 hour use

Paloma Soft

www.wollsdorf.com

6
pricegroup

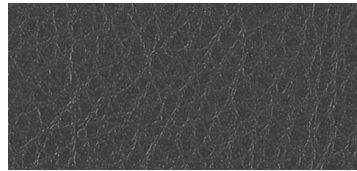
24 hour - heavy duty usage areas

For heavy duty areas with high flammability requirements.

A high quality chrome-free semi-aniline leather with excellent friction, softness and breathing properties. Its high durability makes it a perfect choice for heavy duty applications and long-term use. All our standard colours from Paloma have a special finish adding a particular softness to the leather. Hereby a selection of our standard colours. The full range of Paloma colours are available in our extended collection.



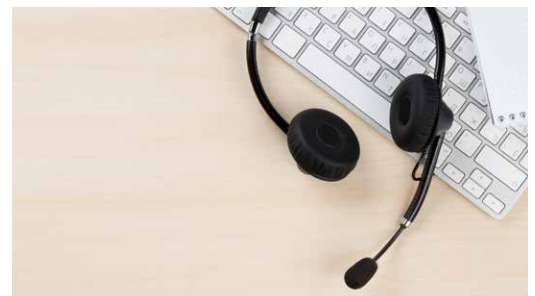
ATG56100 (S)



ATG55185 (S)



ATG 55130 (S)



Material	100% semi-aniline leather from cattle hides
Measurement	Average measurement per hide: ≥ 54 sqft
Flammability	BS EN 1021 1&2 (cigarette & match) BS 5852 Crib 5, IMO A.652(16), IMO MSC 307(88) Annex 1 part 8
Colour fastness to light	6 (ISO 105-B 02)
Colour fastness to rubbing	Wet 80/4 - Dry 1000/4 - Sweat 50/4 - ISO11640
Finish-adhesion	≥ 2.5 N/CM - ISO 11644
Tear-strength	≥ 20 N DIN EN ISO 3377-1
Environmental	Chrome-free tanning No heavy metals ECO2L-certificate Blue Angel RAL-U2 148



Flammability



24 hour use





[FLOKK.COM/RH](https://flokk.com/rh)

Flokk AS

Fridtjof Nansens vei 12 - P.o Box 5055 Majorstuen - N-0301 Oslo, Norway
Tel: +47 22 59 59 00 - info-no@flokk.com